

|           |  |
|-----------|--|
| REFERENCE | BT_2011_X85CUP_08  |
| DATE      | 2011 June 1st  |
| SUBJET    | Cylinder head oil strainer cover and steel elbow fitting |

**CONCERNED: ALL CHAMPIONSHIPS**

**1 - Elbow hose fitting on cylinder head oil strainer cover**

We observed that with time and heat, the steel elbow fitted on the upper oil strainer cover exit (situated on the top of cylinder head) can sometimes get loose.

As shown on the following picture, regarding the position of this elbow, it can be extremely dangerous because of oil projections on the exhaust manifold.



For this reason, we ask you to inspect the fitting of this elbow: if it moves in its bore or if you manage to dismount it easily by hand, please respect the following instructions:

- **Degrease properly** both elbow male side and corresponding bore in cylinder head female side, using brake cleaner.
- Put LOCTITE 648 (Green one) on both side and insert the elbow in the bore  
**Remark** : let the glue dry before starting the engine




**2 - Cylinder head oil strainer cover fitting**

We remarked recently that the upper oil strainer fitting screws on cylinder head tend to break for the same reasons as mentioned on §1-

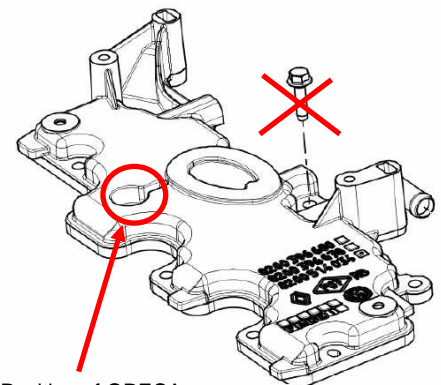
We ask you to replace these 9 original black screws by the following references:

- 9 cylindrical head screws M6x25mm class 12.9 (ref 77 11 158 346)
  - 9 washers M6x14x1,2mm (ref 77 11 158 358)
- (All elements are directly available to ALPINE spare parts department)

 Torque to respect = 12 N.m

**CAUTION :**

When the engine is sealed by ORECA, **do never try** to remove the Electronic TAG, just replace the 8 others screws

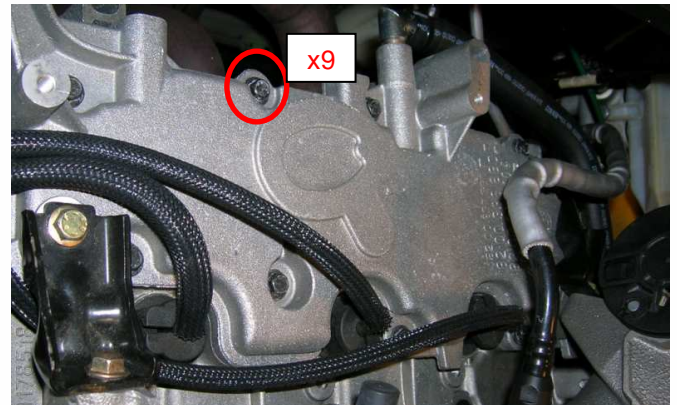
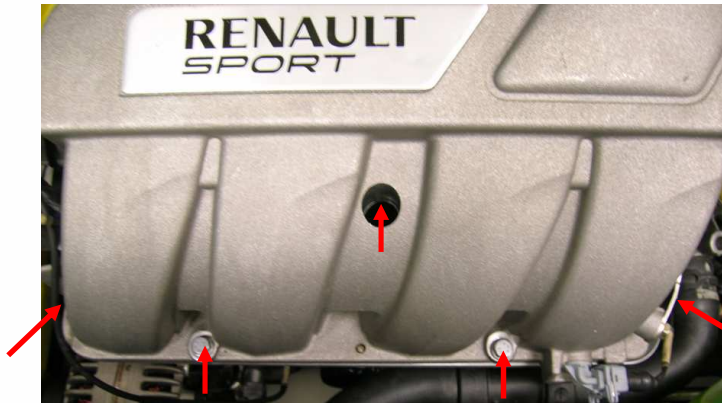


Position of ORECA Electronic TAG

### 3 – Plenum and Cylinder head oil strainer cover fitting

We remind you that for a correct stresses repartition between air intake plenum and cylinder head oil strainer cover; you have to fit them **separately** (without joining brackets first):

- 9 screws for the cylinder head oil strainer cover (see §2-)
- 5 screws for the plenum



**Only** when these 2 elements are correctly fastened on the engine, then fit them together using the 2 brackets:



Bracket n°1



Bracket n°2 (under throttle box)